

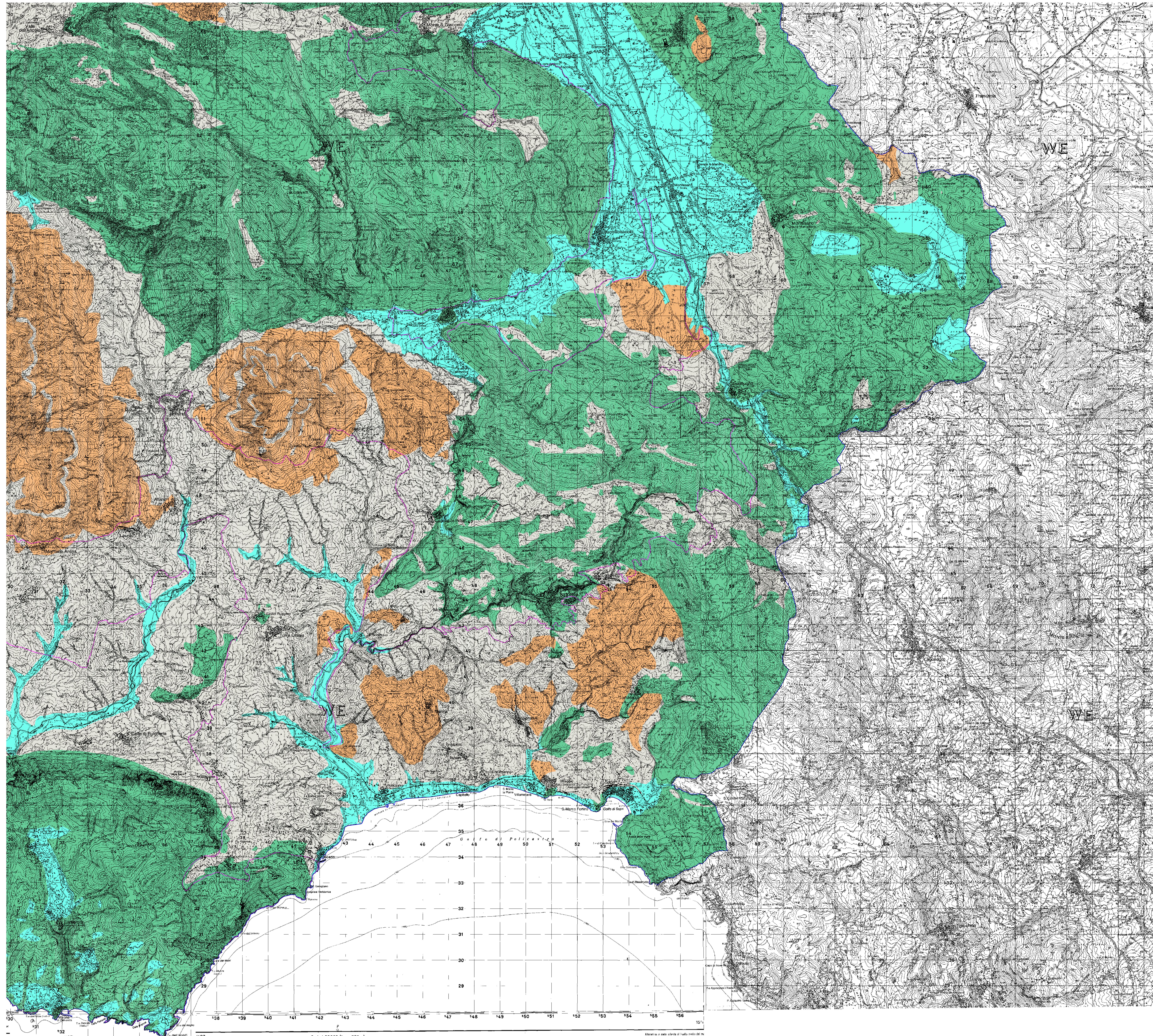
**Carta Geolitologica
 (Semplificata)**





Quadrante 1 nord-est

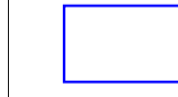

IL Direttore del C.U.G.R.I.
 PROF. ING. LEONARDO CASCINI

IL Responsabile Scientifico
 PROF. ING. FABIO ROSSI

Fascicolo: 28.06.00



- 
 Complesso litologico Alluvionale a prevalente componente sabbioso-limoso-ghiaiosa
- 
 Complesso litologico a prevalente componente argilloso-marnosa e relative coperture
- 
 Complesso litologico a prevalente componente arenaceo-conglomeratica e relative coperture
- 
 Complesso litologico a prevalente componente calcareo-dolomitica e relative coperture

- 
 Confine aree contigue
- 
 Perimetro parco

